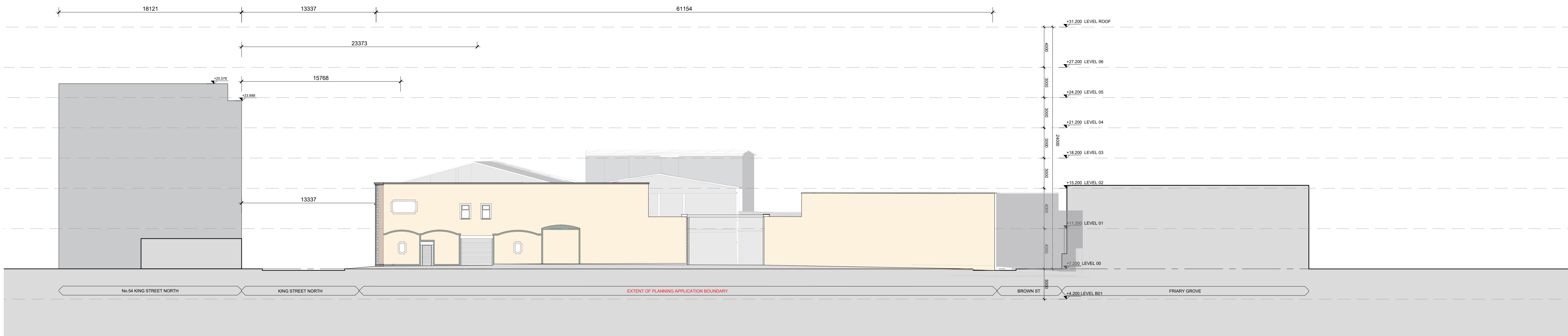




1 CONTIGUOUS ELEVATION D: PROPOSED
0288 1:200 @A0



1 CONTIGUOUS ELEVATION D: EXISTING
0288 1:200 @A0

NOTES / LEGEND

PROPOSED

- [01] BRICKWORK LIGHT - COLOUR MORTAR JOINT DETAIL TO BE APPROVED
- [02] BRICKWORK DARK - COLOUR MORTAR JOINT DETAIL TO BE APPROVED AND TO MATCH ALONG WITH THE PROTECTED STRUCTURE TIME
- [03] METAL LOADED ESB ACCESS DOOR - PFC FINISH TO SELECTED COLOUR TO COMPLY WITH ESB REGULATIONS
- [04] ALUMINIUM FRAMELESS FINISH COLOUR TO BE APPROVED

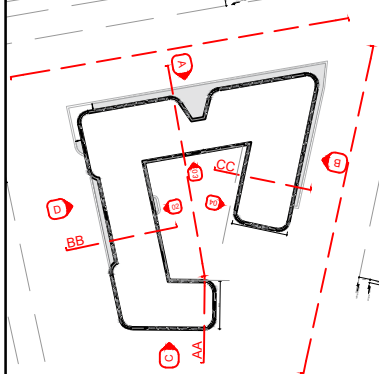
- [05] POWDER COATED ALUMINIUM BALUSTRADE TO 1100MM HEIGHT FIN - FINISH IN THE BOX
- [06] RECEPTION ENTRANCE - POWDER COATED ALUMINIUM REVEAL - FINISH IN THE BOX
- [07] HIGH PERFORMANCE ALUMINIUM/COMPOSITE FRAMED WINDOWS - HIGH PERFORMANCE GLASS WITH LOW EMISSIVITY AND PFC FINISH TO SELECTED COLOUR
- [08] CONTEMPORARY ENTRANCE GATE - METAL REVEAL FINISH COLOUR TO BE APPROVED

- [09] PROPOSED FIRE DOOR SPIC TIC - FINISH IN THE BOX
- [10] PROPOSED DEMOLITION WORKS - TO BE CO-ORDINATED WITH CONSTRUCTION (ARCHITECT)

EXISTING

- [11] PROPOSED DEMOLITION WORKS

Key Plan:



Rev:	Date:	Description:	By:

MOLA 2 Derrynbrook Road,
Dunmurry,
Dublin 4, Ireland
Telephone: +353 1 218 3900
www.molarchitecture.com

Notes:
Do not scale.
Use figured dimensions only.
This drawing is to be read in conjunction with all relevant specifications and drawings.
All dimensions to be checked on site.
In the event of any discrepancies between drawings, the contractor is to inform the Architect immediately.

Stage:

PLANNING

Client:

139-149, NORTH KING STREET

Project:

CONTIGUOUS ELEVATIONS D: EXISTING/PROPOSED

Date:

APRIL 2025

Scale:

1:200 @A0

Sheet:

23005

By:

23005

23005

23005

23005

23005

23005

23005

23005

23005

23005

23005

23005