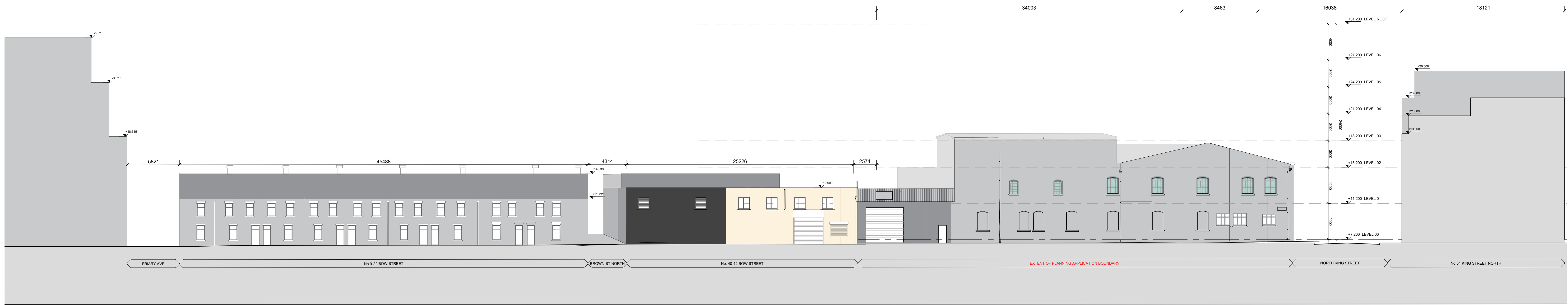




1 CONTIGUOUS ELEVATION B: PROPOSED  
0286 1:200 @A0

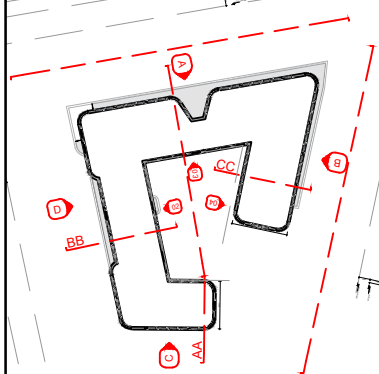


1 CONTIGUOUS ELEVATION B: EXISTING  
0286 1:200 @A0

#### NOTES / LEGEND

PROPOSED	EXISTING
[01] WINDOW LIGHT - COLOUR / MORTAR JOINT DETAIL TO BE APPROVED	[02] POWDER COATED ALUMINIUM BALUSTRADE TO 1100MM HEIGHT AKA - FINISH IN PA. 007
[02] WINDOW GLAZE - COLOUR / MORTAR JOINT DETAIL TO BE APPROVED AND TO MATCH ALONG WITH THE PROTECTED STRUCTURE TILES	[03] RECEPTION ENTRANCE - POWDER COATED ALUMINIUM REVEAL - FINISH IN PA. 007
[03] METAL LOADED ESB ACCESS DOOR - PPC FINISH TO SELECTED COLOUR TO COMPLY WITH ESB REGULATIONS	[04] HIGH PERFORMANCE ALUMINIUM/COMPOSITE FRAMED WINDOWS - HIGH STRENGTH GLAZING WITH LOW EMISSIVITY AREA - FINISH IN PA. 007
[04] ALUMINIUM FRAME/SLIP FINISH / COLOUR TO BE APPROVED	[05] PROPOSED PROTECTED STRUCTURE AMENDMENTS TO BE COORDINATED WITH CONSERVATION (ARCHITECT)
	[06] PROPOSED DEMOLITION WORKS
	[07] CONTINUOUS ENTRANCE GATE - METAL REVEAL FINISH / COLOUR TO BE APPROVED

#### Key Plan:



Rev:	Date:	Description:	By:

**MOLA**

2 Derrynbrook Road,  
Derry, Londonderry,  
Northern Ireland  
Telephone: +353 1 218 3900  
www.molaarchitecture.com

Notes:  
Do not scale.  
Use figured dimensions only.  
This drawing is to be read in conjunction with all relevant specifications and drawings.  
All dimensions to be checked on site.  
In the event of any discrepancies between drawings, the contractor is to inform the Architect immediately.

#### Stage:

PLANNING

#### Client:

#### Project:

139-149, NORTH KING STREET

#### Drawing:

CONTIGUOUS ELEVATIONS B: EXISTING/PROPOSED

#### Date:

APRIL 2025

#### Scale:

1:200 @A0

#### Sheet:

23005

23005\_MOLA\_A01\_00\_DR\_A\_XX\_0286